



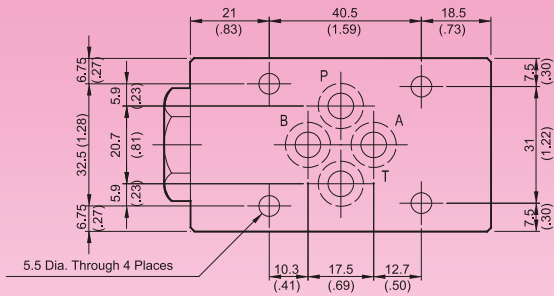
## DIMENSIONS

MILLIMETERS(INCHES)

### MC\*-01

### Check Valves(Modular Type)

MOUNTING SURFACE:MC\*-01-CETOP3  
ISO 03-NFPAD03

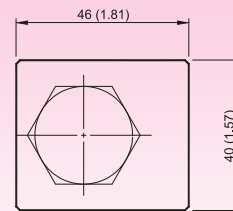
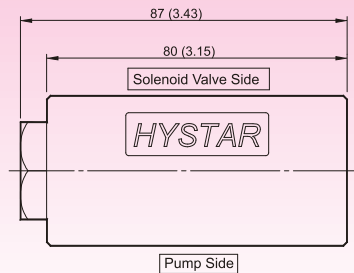


#### Valve Specifications & Attachment

Flow Rating	50 lpm (13.2 gpm)
Max. Pressure	250 bar (3600 psi)
Weight kg/(lbs.)	1.1 (2.4)
CODE:20	M5 X85LgX4pcs
CODE:2090	10-24UNCX3-1/4"LgX4pcs
Mounting Surface O-Ring P9 x 4 pc	



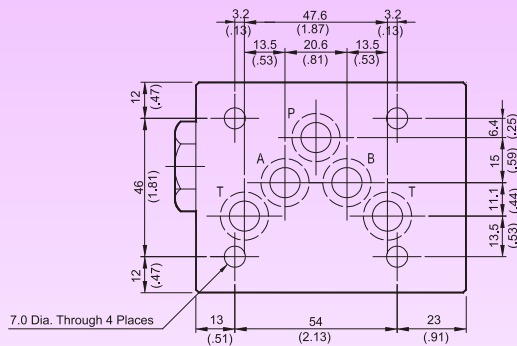
SYMBOL



### MC\*-03

### Check Valves(Modular Type)

MOUNTING SURFACE:MC\*-03-CETOP5  
ISO 05-NFPAD05

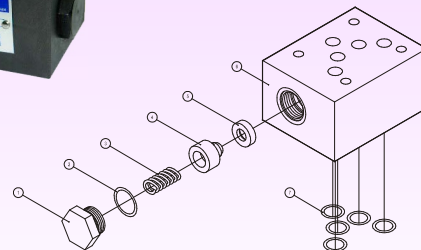
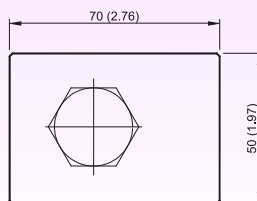
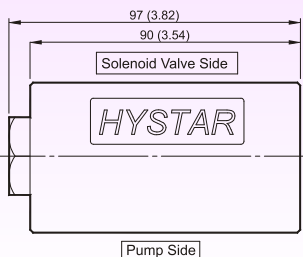


#### Valve Specifications & Attachment

Flow Rating	100 lpm (26.5 gpm)
Max. Pressure	250 bar (3600 psi)
Weight kg/(lbs.)	3.5 (7.7)
CODE:20	M6 X90LgX4pcs
CODE:2090	1/4-20UNCX3-1/2LgX4pcs
Mounting Surface O-Ring P12 x 5 pc	



SYMBOL



## DIMENSIONS

## MILLIMETERS(INCHES)

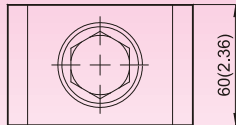
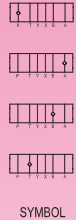
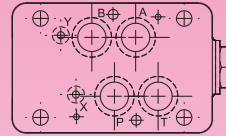
### MCP-04 Check Valves(Modular Type)

MOUNTING SURFACE:MC\*-04-CETOP7  
ISO 07-NFPAD07

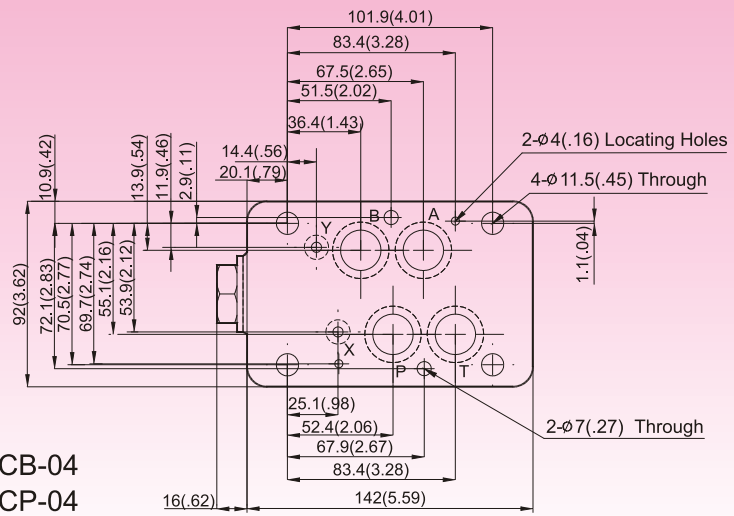
#### Valve Specifications & Attachment

Flow Rating	190 lpm (50.2 gpm)
Max. Pressure	250 bar (3600 psi)
Weight kg(lbs.)	7.0 (15.4)
CODE:20	M6X125LgX2pcs M10X120LgX4pcs
CODE:2090	1/4-20UNCX4-7/8"LgX2pcs 3/8-16UNCX4-5/8"Lg X4pcs
Mounting Surface O-Ring P9 x 2 pc & P22A x 4 pcs	

MCA-04  
MCT-04



MCB-04  
MCP-04



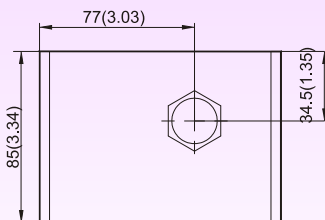
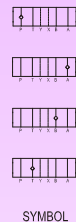
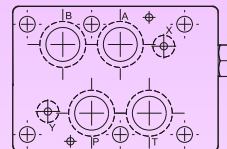
### MCP-06 Check Valves(Modular Type)

MOUNTING SURFACE:MC\*-06-CETOP8  
ISO 08-NFPAD08

#### Valve Specifications & Attachment

Flow Rating	300 lpm (79.3 gpm)
Max. Pressure	250 bar (3600 psi)
Weight kg(lbs.)	11.2 (24.6)
CODE:20	M12X140LgX6pcs
CODE:2090	1/2-13UNCX4-5/8"Lg X6pcs
Mounting Surface O-Ring P12 x 2 pc, P28 x 4 pcs	

MCA-06  
MCT-06



MCB-06  
MCP-06

